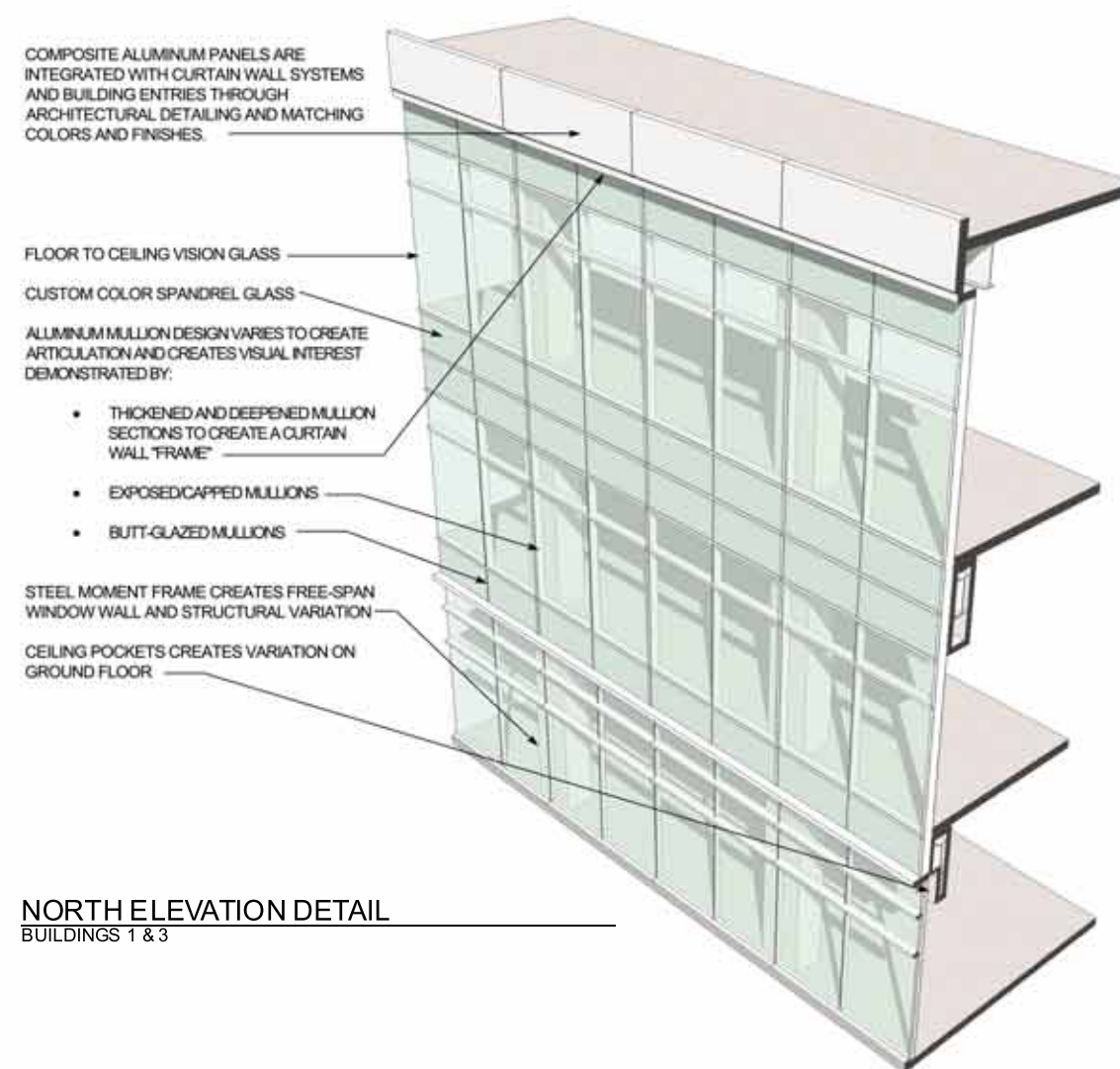
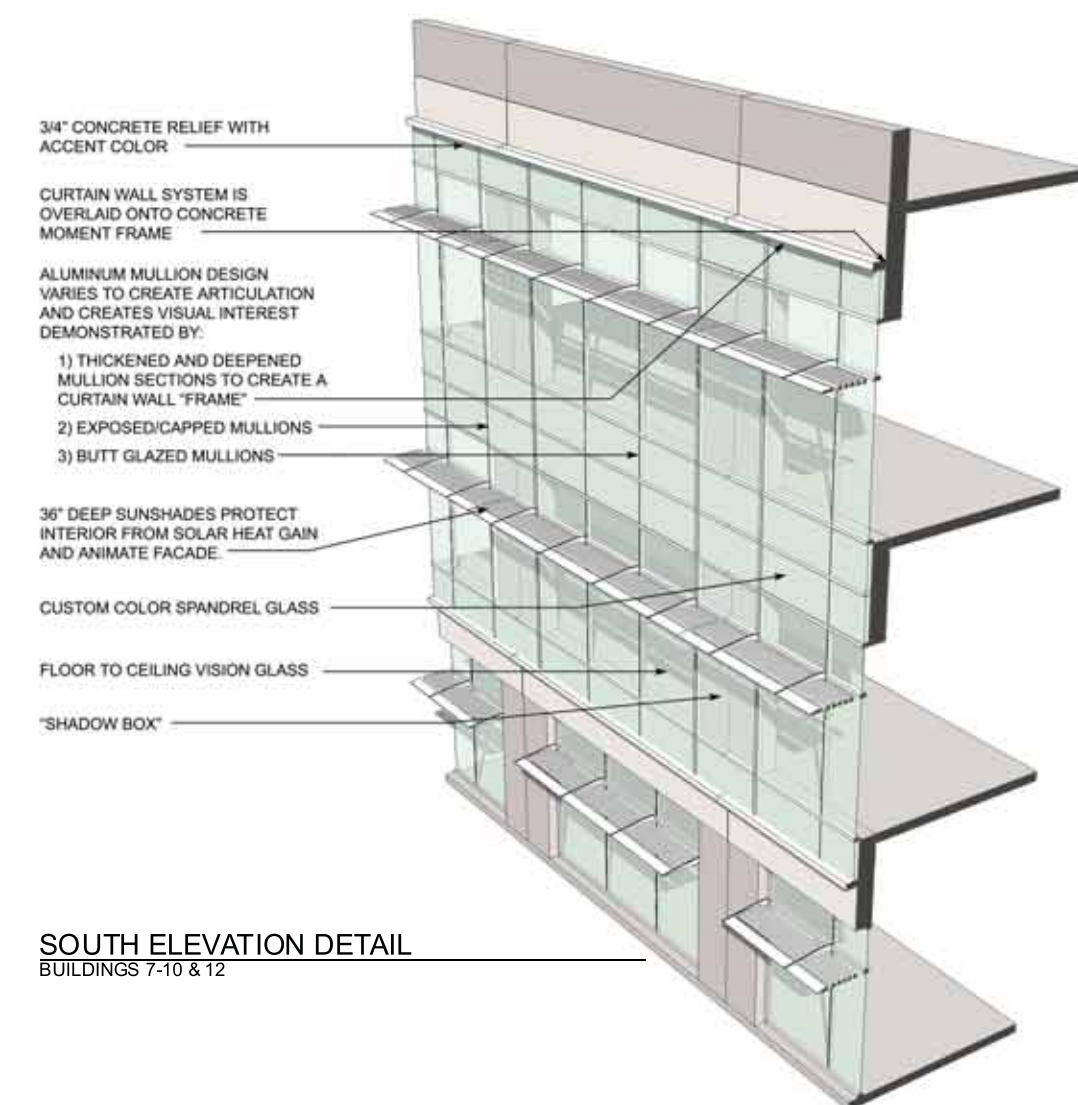


EAST-WEST ELEVATION DETAIL  
BUILDINGS 7-10 & 12



NORTH ELEVATION DETAIL  
BUILDINGS 1 & 3



SOUTH ELEVATION DETAIL  
BUILDINGS 7-10 & 12



# LEGACY PARK

TUSTIN, CA



- 25% ENERGY REDUCTION OVER 2005 TITLE 24
- ENERGY STAR RATED COOL ROOF
- HIGH EFFICIENCY ENVELOPE
- RESPECT TO SOLAR ORIENTATION
- HIGH EFFICIENCY INDOOR WATER-COOLED VAV UNITS
- VARIABLE SPEED CONDENSER WATER FLOW
- HIGH EFFICIENCY EXTERIOR LIGHTING

**ENERGY STAR Challenge Criteria:**

- Energy Use Intensity (EUI) = 139.7 kBtu / SF / yr
- Percent CO2 reduction = 47%
- ENERGY STAR design rating = 91

**DESCRIPTION:**

The Technology District at Legacy Park is part of the redevelopment of the Tustin Marine Air Corp Station in Tustin, California. The 807,000-sq.-ft. business park sits on a 41-acre site and consists of twelve 2 and 3-story buildings that will be constructed in four separate phases. The project will be distinctive among similar office developments because sustainability is the guiding principle behind the design of the landscape and building architecture. Intended to be marketed to the region's many "high tech" companies, the project is registered with the USGBC under its LEED Core and Shell certification process, and is a participant in Southern California Edison's Savings by Design program.

**SAVINGS STATISTICS (compared to an average building EPA rating of 50):**

- Energy savings = 25,471,114 kBtu
- CO2 savings = 997.5 tons CO2

